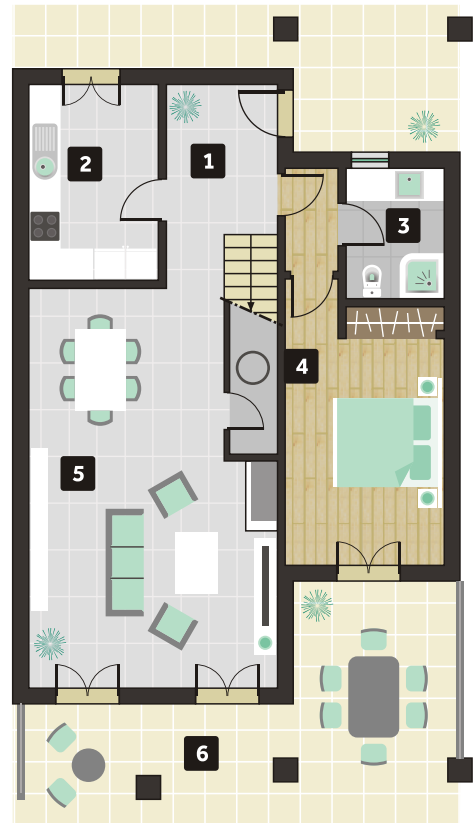


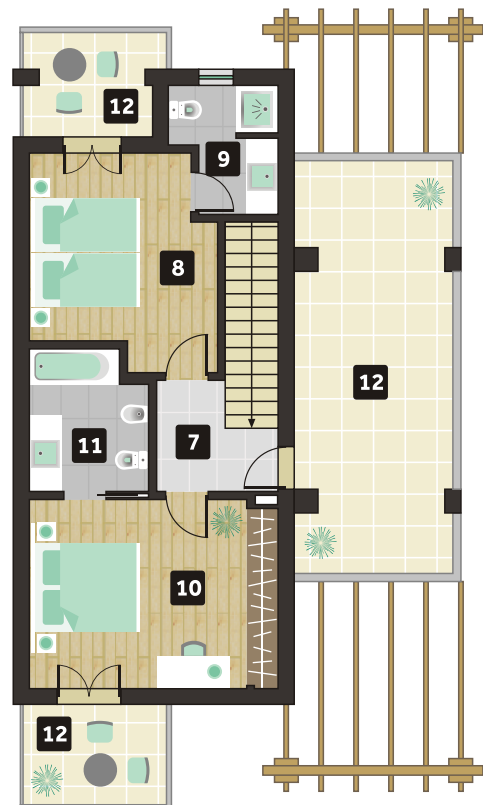
3 BEDROOM TOWNHOUSE Unit A4



Ground floor

Construction area	133,9 m ²
Outdoor area ground floor	35,5 m ²
Balcony areas 1st floor	36,5 m ²
Total area	205,9 m ²

1. Entrance hall	6,6 m ²
2. Kitchen	9,1 m ²
3. Toilet	4,6 m ²
4. Bedroom	15,4 m ²
5. Living and dining room	32,2 m ²
6. Outdoor area	35,5 m ²
7. Circulation area	3,9 m ²
8. Bedroom	13,0 m ²
9. Toilet	4,2 m ²
10. Bedroom	16,5 m ²
11. Toilet	5,7 m ²
12. Balconies	36,5 m ²



First floor