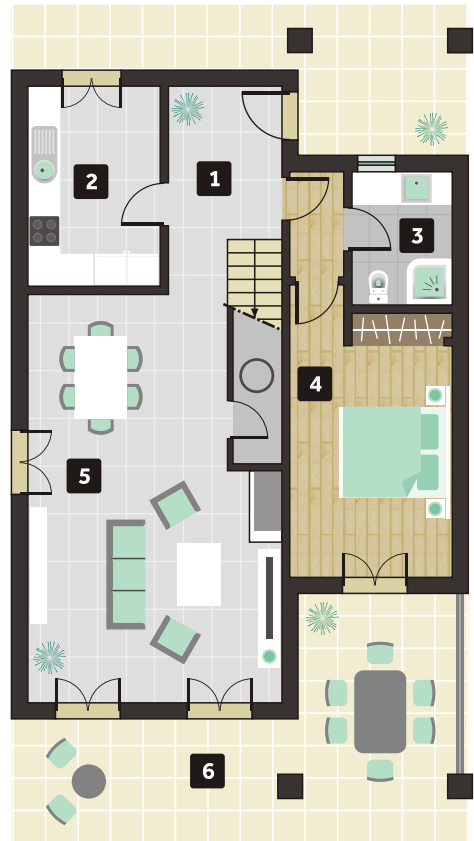


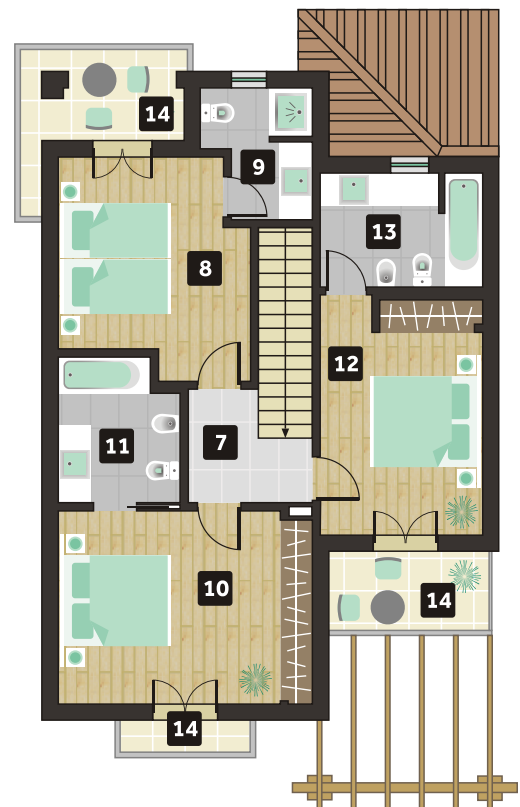
4 BEDROOM TOWNHOUSE Unit B2



Ground floor

Construction area	156,0 m ²
Outdoor area ground floor	73,7 m ²
Balcony areas 1st floor	8,3 m ²
Total area	238,0 m ²

1. Entrance hall	6,8 m ²
2. Kitchen	9,1 m ²
3. Toilet	4,6 m ²
4. Bedroom	15,4 m ²
5. Living and dining room	31,9 m ²
6. Outdoor area	73,7 m ²
7. Circulation area	3,9 m ²
8. Bedroom	13,0 m ²
9. Toilet	4,2 m ²
10. Bedroom	16,5 m ²
11. Toilet	5,7 m ²
12. Bedroom	13,0 m ²
13. Toilet	6,6 m ²
14. Balconies	8,3 m ²



First floor