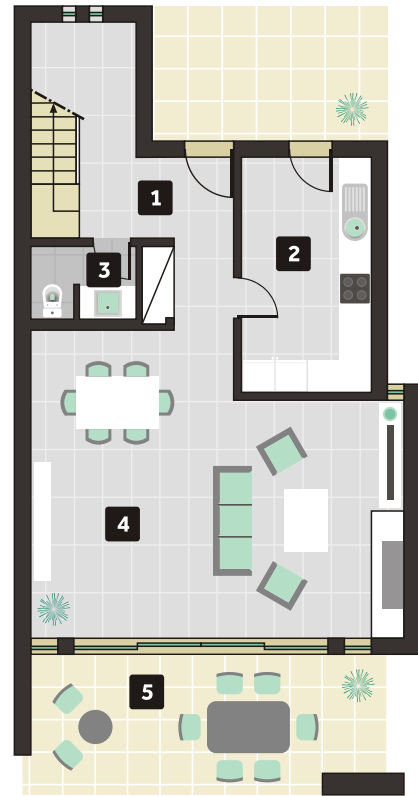


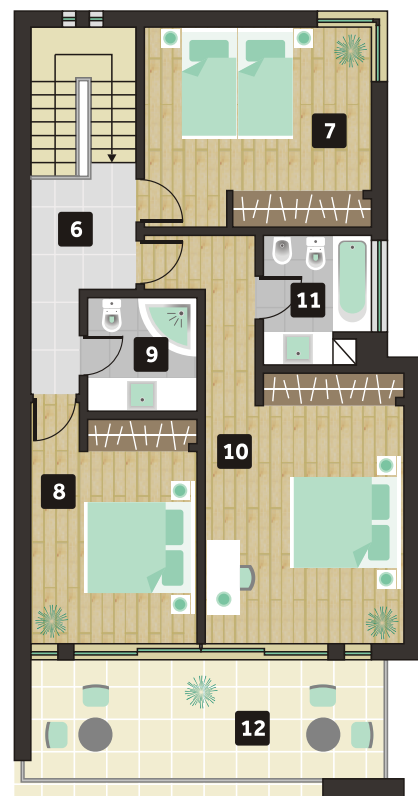
3 BEDROOM TOWNHOUSE Unit C4



Ground floor

Construction area	144,5 m ²
Outdoor area ground floor	63,0 m ²
Balcony areas 1st floor	17,5 m ²
Total area	225,0 m ²

1. Entrance hall	6,9 m ²
2. Kitchen	10,4 m ²
3. Cloakroom	2,7 m ²
4. Living and dining room	35,2 m ²
5. Outdoor area	63,0 m ²
6. Circulation area	4,2 m ²
7. Bedroom	15,5 m ²
8. Bedroom	14,7 m ²
9. Toilet	4,1 m ²
10. Bedroom	21,8 m ²
11. Toilet	4,8 m ²
12. Balconies	17,5 m ²



First floor