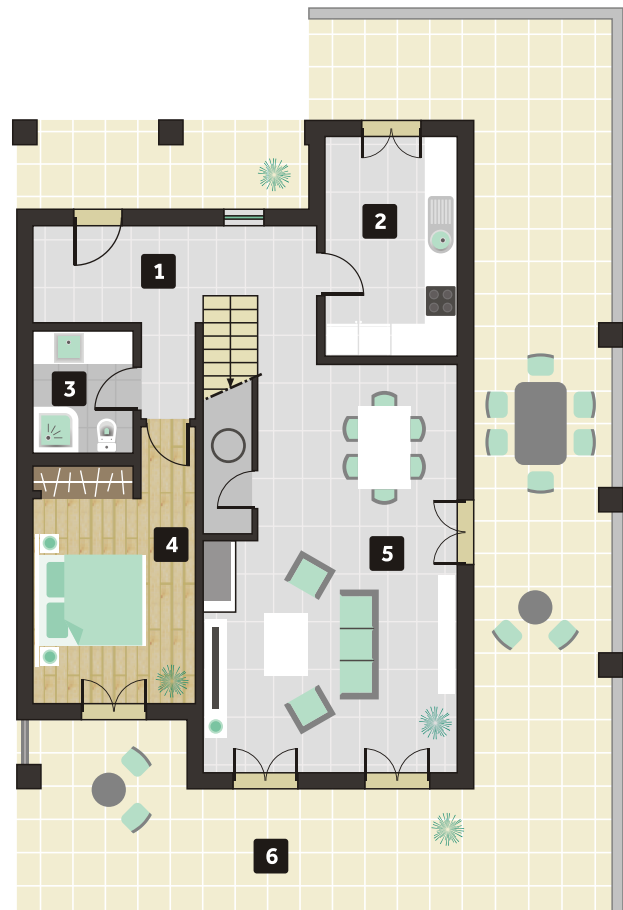


4 BEDROOM TOWNHOUSE Unit D1

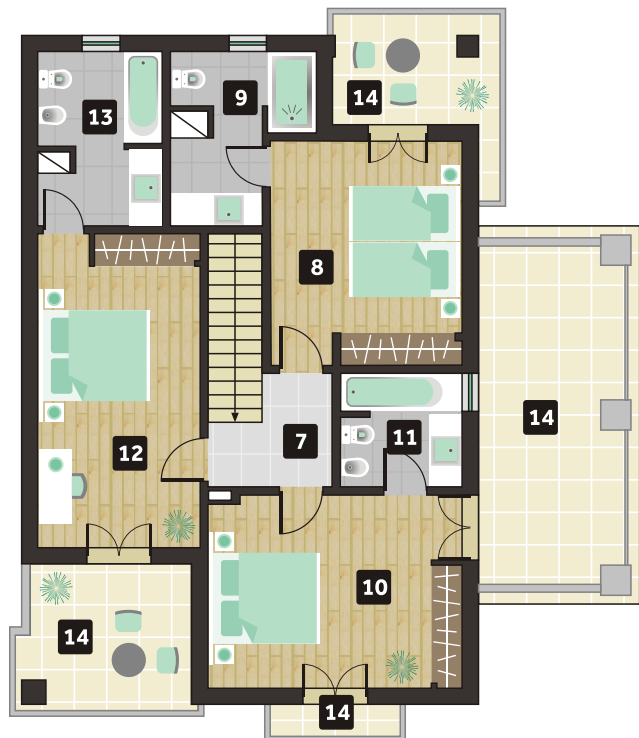


Construction area	167,0 m ²
Outdoor area ground floor	103,8 m ²
Balcony areas 1st floor	39,4 m ²
Total area	310,2 m ²

1. Entrance hall	11,7 m ²
2. Kitchen	9,1 m ²
3. Toilet	4,3 m ²
4. Bedroom	13,8 m ²
5. Living and dining room	32,5 m ²
6. Outdoor area	103,8 m ²
7. Circulation area	3,9 m ²
8. Bedroom	14,6 m ²
9. Toilet	6,8 m ²
10. Bedroom	16,6 m ²
11. Toilet	4,8 m ²
12. Bedroom	15,4 m ²
13. Toilet	7,1 m ²
14. Balconies	39,4 m ²



Ground floor



First floor