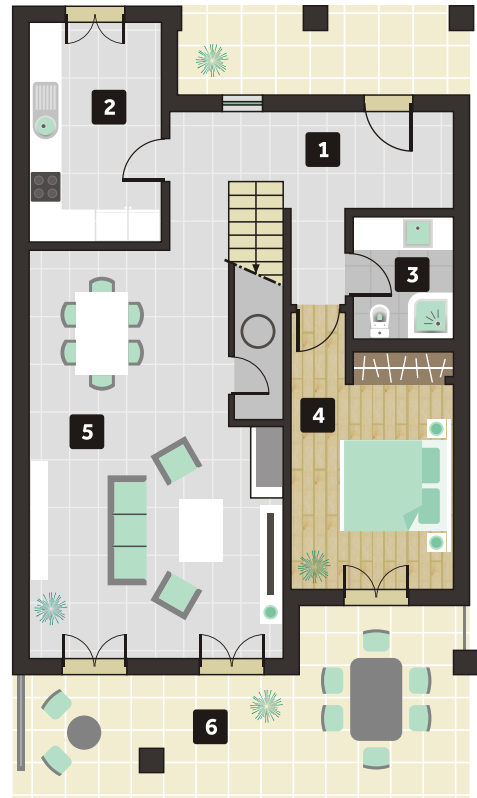


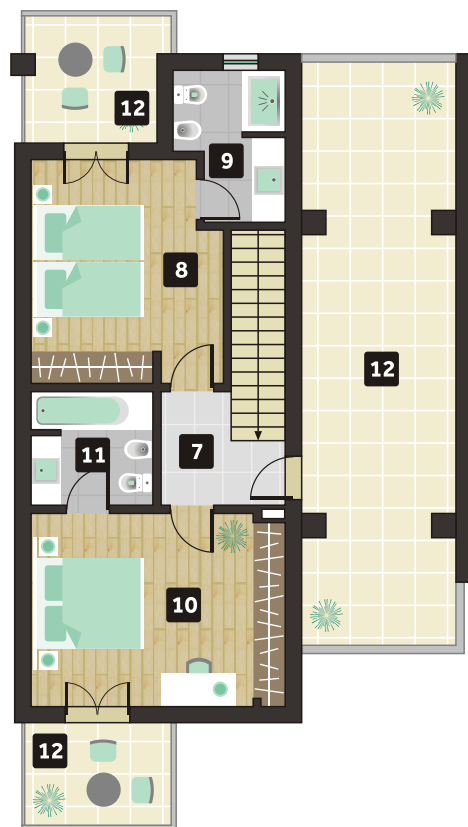
3 BEDROOM TOWNHOUSE Unit D2



Ground floor

Construction area	135,7 m ²
Outdoor area ground floor	68,2 m ²
Balcony areas 1st floor	43,8 m ²
Total area	247,7 m ²

1. Entrance hall	11,7 m ²
2. Kitchen	9,1 m ²
3. Toilet	4,3 m ²
4. Bedroom	13,8 m ²
5. Living and dining room	32,5 m ²
6. Outdoor area	68,2 m ²
7. Circulation area	3,8 m ²
8. Bedroom	14,1 m ²
9. Toilet	3,9 m ²
10. Bedroom	16,6 m ²
11. Toilet	4,7 m ²
12. Balconies	43,8 m ²



First floor