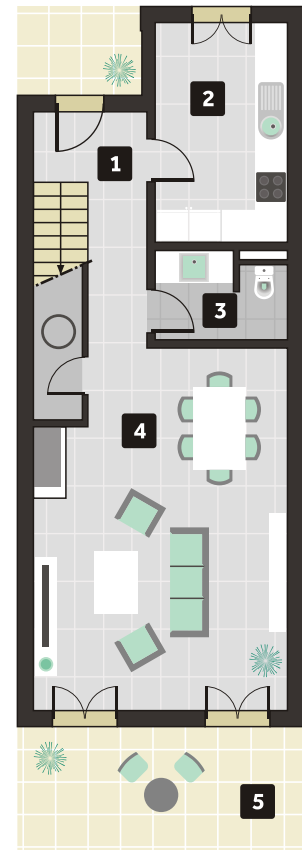


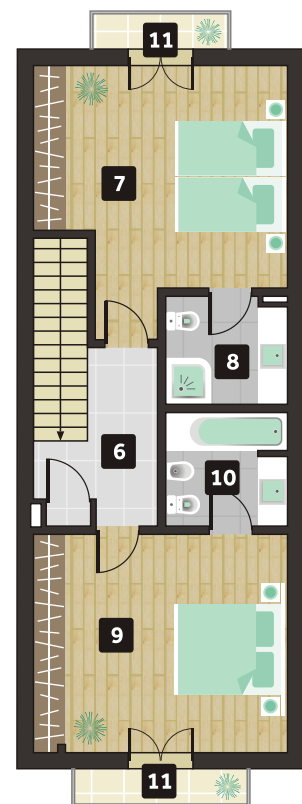
2 BEDROOM TOWNHOUSE Unit D4



Ground floor

Construction area	124,7 m ²
Outdoor area ground floor	31,6 m ²
Balcony areas 1st floor	4,1 m ²
Total area	160,4 m ²

1. Entrance Hall	6,2 m ²
2. Kitchen	10,1 m ²
3. Cloakroom	4,1 m ²
4. Living and dining room	29,5 m ²
5. Outdoor area	31,6 Sm ²
6. Circulation area	5,9 m ²
7. Bedroom	19,6 m ²
8. Toilet	4,2 m ²
9. Bedroom	18,8 m ²
10. Toilet	4,7 m ²
11. Balconies	4,1 m ²



First floor